

**WiseDoc®
& WiseUv®**

Gel Documentation System

Wisd. 
LABORATORY INSTRUMENTS

- **UV Transilluminators**
- **Portable Gel Documentation System**
- **Unified Gel Documentation System**

For Gel Documentation and Analysis, you can find **WiseDoc®** Range is the Best Choice Based on it's Cost-effective, Flexible Configuration and High Specification.

The Compact 1,5M Pixel Camera, Safe Darkroom and Built-in Transilluminator Implement an Innovation in DNA Imaging Labs.

You can use the System with PC Through USB Interface.

► UV Transilluminator



WUV-L50

► Portable Gel Documentation System



WGD-20



WGD-30

► Unified Gel Documentation System

“witeg” **WiseUV® WUV** UV Transilluminators, Standard- and Compact-Case Models

Economical, Robust, Versatile, Hinged UV-Blocking Safety Cover, 20×20 cm Filter, 48 W / 90 W, 312 nm / 365 nm / 312+365 nm

- Low Cost, Robust, Versatile, Affordable & Gentle Excitation
- Hinged UV-Blocking Safety Cover Protects User from UV Radiation
- Stainless-Steel Frame and Robust Steel Housing
- Increased UV Intensity and Homogeneity
- CE Certified

Application & Features

- * Low Cost, Robust, Versatile, Affordable & Gentle Excitation.
- * Hinged UV-Blocking Safety Cover Protects User from UV Radiation.
- * Long-Life Electronic. (Low Heat, no Flickering)
- * Stainless-Steel Frame and Robust Steel Housing.
- * Increased UV Intensity and Homogeneity.
- * Used for Standard Gel Documentation and Preparative Work.
- * Ideal for Detecting Very Small Amount of DNA & RNA Stained by EtBr.
- * High (100 %) / Low (75 %) Intensity Switch.
- * CE Certified.

Specification

Model	WUV-L10	WUV-L20	WUV-L50	WUV-M10	WUV-M20
Filter Size (mm)	200 × 200				
Wave Length (nm)	Single 365	Single 312	Dual 365+312	Single 365	Single 312
UV Lamps	15 W × 6 ea (90 W)			8 W × 6 ea (48 W)	
Dimension (w × d × h) (mm)	495 × 330 × 95			350 × 275 × 95	
Weight	10 kg			8 kg	
Others	CE Certified				
Packing Dimension (w × d × h) (mm)	520 × 380 × 220			380 × 320 × 220	
Gross Weight	12 kg			10 kg	
Power Consumption	90 W			48 W	
Power plug type	Hybrid E+F				
Power	AC 230 V, 50 / 60 Hz				

* Other Specifications are available upon Customer's Request.

Ordering Information

Standard Case Model

- DH.WUV00010 Transilluminator, **WUV-L10**, 20 × 20 cm Filter, 365 nm, 15 W × 6 ea
 DH.WUV00020 , **WUV-L20**, 20 × 20 cm Filter, 312 nm, 15 W × 6 ea
 DH.WUV00050 , **WUV-L50**, 20 × 20 cm Filter, 365 nm + 312 nm, 15 W × 6 ea

Mini Case Model

- DH.WUV00110 Transilluminator, **WUV-M10**, 20 × 20 cm Filter, 365 nm, 8 W × 6 ea
 DH.WUV00120 , **WUV-M20**, 20 × 20 cm Filter, 312 nm, 8 W × 6 ea

Spare Accessories

- DH.WUV01010 UV Lamp, **UVL365**, for **WUV-L10/-L50**, 365 nm, 15 W
 DH.WUV01020 , **UVL312**, for **WUV-L20/-L50**, 312 nm, 15 W
 DH.WUV01110 , **UVM365** for **WUV-M10**, 365 nm, 8 W
 DH.WUV02110 , **UVM312** for **WUV-M20**, 312 nm, 8 W



Transilluminator, Standard Type (WUV-L50)



Transilluminator, Mini Type (WUV-M20)

“witeg” WiseDoc® WGD-20 Portable Gel Documentation System, 1.5M Pixel
 Compact & Cost-Effective System, Real-Time Image through USB Interface, WiseCapture II™ Capture Software,
 Portable Darkroom Hood with Digital CCD Camera & Optical Lens, TotalLab™ DNA Analysis Software



Portable Gel Documentation System (WGD-20)

- The Most Cost-Effective System in the Market
- High Precise and Large Caliber Optical Lens with Zoom, Focus and Iris Control are Used
- CE Certified

Application & Features

- * The Most Cost-Effective System in the Market.
- * Digital CCD Camera (Resolution 1.5 Million pixel) with Portable Darkroom is Offered.
- * 1.360×1.024, 10-bit CCD, Available for 8-bit Gray Level Image Capturing.
- * External Dimension : 260×260×430 mm
- * Weight : 9 kg
- * Power Consumption : N/A
- * Very Compact Portable Darkroom System Enables the Existing Transilluminators in the Lab to be used together with. High Flexibility in use is Offered.
- * High-Precision and Large Caliber Optical Lens with Zoom, Focus and Iris Control is used.
- * USB 2,0 Interface is Available, through which Real-Time Images are Transferred Directly to PC.
- * WiseCapture II™ Software : Easy and Fast Capture of Gel Image.
- * TotalLab™ Software : Fully Automatic, Single Button Press Complete Image Analysis within Area of Interest. (Optional)
- * CE Certified.

Specification

Model		WGD-20
CCD Module	Image Area Size	1 / 2 " CCD
	Max. Resolution	1.360×1.024
	Pixel Size	4,65×4,65 um
	Lens Mount	C mount
	Power	Supplied USB
	Optical Size	7,6×6,2 mm
	Connect to PC	USB 2,0
Manual Zoom Lens	Iris	F1.0 - Close
	Focal Length	8~48mm
	Operation Temp.	- 10 °C to + 50 °C
Overall	Dimension (w×d×h) (mm)	260×260×430
	Weight	9 kg
	Software Capability	Windows XP, Vista & 7
Packing Dimension (w×d×h) (mm)		400×350×510
Others		CE Certified
Gross Weight		18 kg
Power Supply*		USB Only

* Other Specifications are available upon Customer's Request.



WiseCapture II™ : Real-Time Image Viewing, Capture, Manipulate and Save Images

※ Computer System Requirements

- Intel Chipset, USB 2,0 Support Mainboard
- Over Pentium 4 Processor
- Over 256 MB Main Memory
- Over 60 MB Space of HDD for Installation and Running
- Windows XP and Vista OS

<Continued on Next page>

<Continued from... "witeg" **WiseDoc® WGD-20** Portable Gel Documentation System >

TotalLab™ Software

TotalLab™ Quant

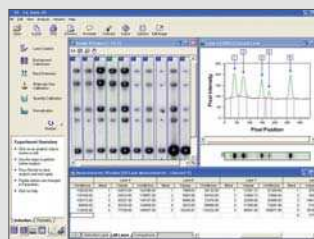
- Automatic and Manual Lane Detection
- Background Subtraction
- Fully Automatic Band Detection
- Molecular Size / pI Calibration
- Quantity Calibration
- Normalization

Phoretix 1D (additional function)

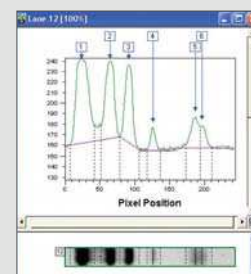
- Band Matching, Band Picking, Dendrograms
- Intensity Calibration

Phoretix 1D Pro (additional function)

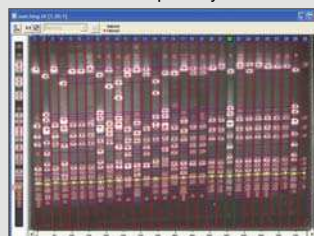
- Match Band Data Patterns across Large Groups of Lanes
- Choice of Algorithms to Generate Dendrograms: NeighborJoining, UPGMA, Complete Linkage, Single Linkage, Ward
- Library, Queries Function



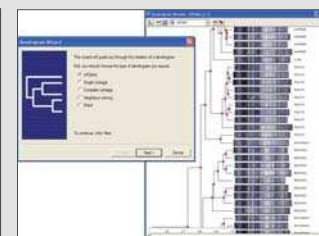
One Stop Analysis



Lane & Band



Band Matching



Band Pattern Analysis

Ordering Information

- DH.WGD00020** Gel Doc. System, **WGD-20**, with a Camera, Portable Darkroom Hood and WiseCapture II™
- DH.WGD00024** Gel Doc. System, **WGD-20S**, with a Camera, Portable Darkroom Hood, **TotalLab™ Quant**, DNA Analysis S/W and WiseCapture II™

Spare & Optional Accessories

- DH.WUV00020** Transilluminator, **WUV-L20**, 20 × 20 cm Filter, 312 nm, 15 W × 6 ea
- DH.WUV00050** , **WUV-L50**, 20 × 20 cm Filter, 365 nm + 312 nm, 15 W × 6 ea
- DH.WUV00120** , **WUV-M20**, 20 × 20 cm Filter, 312 nm, 8 W × 6 ea
- DH.WGD00100** **TotalLab™ Quant**, DNA Analysis S/W
- DH.WGD00120** **Phoretix 1D**, DNA Analysis S/W
- DH.WGD00121** **Phoretix 1D Pro**, DNA Analysis S/W
- DH.WGD00200** Laptop Computer for WGD Gel Doc. System, WGD-Laptop

“witeg” WiseDoc[®] WGD-30 Unified Gel Documentation System, 1,5M Pixel
 Complete System, Real-Time Image through USB Interface, WiseCapture II[™] Capture Software,
 Unified Darkroom System in-Built Sliding Transilluminator with Digital CCD Camera & Optical Lens, TotalLab[™] DNA Analysis Software



Unified Gel Documentation System (WGD-30)

- Complete System with Digital CCD Camera, Safety Darkroom Hood and in-built Transilluminator is Offered
- High-Quality Optical Lens with Zoom, Focus and Iris Control is Used
- CE Certified

Application & Features

- * Complete System with a Digital CCD Camera, Safety Darkroom Hood and in-built Transilluminator is Offered.
- * Unified Darkroom System with in-built Sliding Transilluminator offers very High Safety in use.
- * Transilluminator: 312 nm, 8 W x 6 UV lamps. (WUV-M20)
- * External Dimension : 395 x 393 x 676,5 mm
- * Internal Dimension : 350 x 275 x 400 mm
- * Door Size : 343 x 257
- * Weight : 19 kg
- * White Light : 2 x Fluorescent lamp.
- * Power Consumption : 60 W
- * Digital CCD Camera. (Resolution 1.5 Million pixel)
- * 1.360 x 1.024, 10-bit CCD, Available for 8-bit Gray Level Image Capturing.
- * High-Quality Optical Lens with Zoom, Focus and Iris Control (Manual Adjust) is used.
- * USB 2.0 Interface is available, through which Real-time Images are Transferred Directly to PC.
- * WiseCapture II[™] Software : Easy and Fast Capture of Gel Image. (Included)
- * TotalLab[™] Software : Fully Automatic, Single Button Press Complete Image Analysis within Area of Interest.
- * CE Certified.



WiseCapture II[™] : Real-Time Image Viewing, Capture, Manipulate and Save Images

- ※ Computer System Requirements
- Intel Chipset, USB 2.0 Support Mainboard
 - Over Pentium 4 Processor
 - Over 256MB Main Memory
 - Over 60MB Space of HDD for Installation and Running
 - Windows XP and Vista OS

Specification

Model		WGD-30
CCD Module	Image Area Size	1 / 2 " CCD
	Max. Resolution	1.360 x 1.024
	Pixel Size	4,65 x 4,65 um
	Lens Mount	C mount
	Power	Supplied USB
	Optical Size	7,6 x 6,2 mm
Connect to PC		USB 2,0
Manual Zoom Lens	Iris	F1,0 - Close
	Focal Length	8-48 mm
	Operation Temp.	-10 °C to +50 °C
Transilluminator	Filter Size	200 x 200 mm
	Wave Length	Single 312 um
	UV Lamps	8 W x 6 ea
Overall	DaylightFluorescent Lamps	7 W x 2 ea
	Dimension (w x d x h) (mm)	395 x 393 x 676,5
	Weighth	19 kg
	Power	AC 110V, 60 Hz or 220 V, 50 / 60 Hz
	Power Consumption	65 W
Software Capability		Windows XP, Vista & 7
Others		CE Certified
Packing Dimension (w x d x h) (mm)		440 x 440 x 750
Gross Weight		23 kg

* Other Specifications are available upon Customer's Request.

<Continued on Next page>

<Continued from... "witeg" WiseDoc® WGD-30 Unified Gel Documentation System >

WGD-20 / 30 Lens System

Iris Control

Excellent Bright Zoom Lens (F 1,0 - Close)

Zoom Control

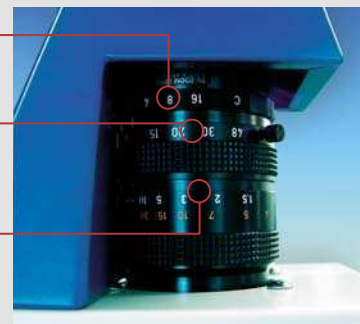
Wide Range & Easy to Control
Focal Length Available on about 8 - 16mm

Focus Control

High Precision Large Caliber Zoom Lens

USB Interface

A standard High-Throughput PC Interface Enables High-Speed Transfer of Real-Time Images from CCD Camera.
(NOTE) Only the USB version 2,0 is Supported.



WGD-20/-30 Lens

Ordering Information

- DH.WGD00030** Gel Doc. System, **WGD-30**, with a Camera (1,5M Pixel), Darkroom Hood, in-built **WUV-M20** Transilluminator and WiseCapture II™
- DH.WGD00034** Gel Doc. System, **WGD-30S**, with a Camera (1,5M Pixel), Darkroom Hood, in-built **WUV-M20** Transilluminator, WiseCapture II™ and **TotalLab™ Quant** DNA Analysis S/W

Spare & Optional Accessories

- DH.WGD00100** **TotalLab™ Quant**, DNA Analysis S/W
- DH.WGD00120** **Phoretix 1D**, DNA Analysis S/W
- DH.WGD00121** **Phoretix 1D Pro**, DNA Analysis S/W
- DH.WGD00200** LapTop Computer, for WGD Gel Doc.System
- DH.WUV01110** UV Lamp, **UVM365** for **WUV-M10**, 365 nm, 8 W
- DH.WUV02110** , **UVM312** for **WUV-M20**, 312 nm, 8 W