

**WiseMix®
& WiseShake®**

Rockers Rotators Shakers



WiseMix® & WiseShake® Rocker, Rotator, Vortex Mixer & Shaker

- Programmable Digital Feedback Controlled Rockers
- Digital Feedback Controlled Rotator
- Multifunctional Vortex Mixer
- Digital Orbital Shaker
- Digital Reciprocating Shaker

- Robust and Durable Mixing System.
- High Power, Stable Motion with Low Noise.

► Programmable
Digital Feedback
Controlled Rocker



RK-1D



RT-10



SHO-1D



SHO-2D

► Multifunctional
Vortex Mixer



VM-10

► Digital Orbital / Reciprocating
Shaker

“witeg” **WiseMix®RK** Programmable Digital Rockers, Programmable Digital Feedback Control Smooth Start & Wave Motion, High Precision Digital Speed Control, 5~50 rpm, Tilt Angle $\pm 6^\circ / \pm 9^\circ$

- High Precision Digital Speed Control : 1 rpm
- Patented Jog-Shuttle Control System
- CE Certified



Programmable Digital Rocker (RK-1D)

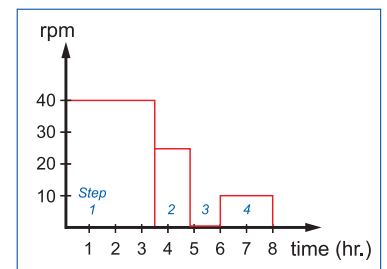
Application & Features

- * High Precision Digital Speed Control : 1 rpm.
- * Programmable Operation Mode Supported : 10 Steps and 6 Programs.
- * Digital Timer : Max. 99 hr 59 min.
- * Digital LCD Display with Back-Light Function for Timer, RPM and Power Bar-Graph.
- * Smooth Start and Change of the Stirring Speed.
- * Over-Load Protection Functions for Motor.
- * Storage Function for Set Values : RPM and Timer.
- * Alarm Function : Error Status and Timer-end.
- * Stainless Steel Platform Comes with Gray Nonslip Rubber Pad.
- * Stackable Platform with Pad to Double Mixing Area. (Optional)
- * Locking Mode supported for Experimental Safety. (Input to Jog-Shuttle can be Disabled)
- * Patented Jog-Shuttle Control System.
- * CE Certified.

Specification

Model		RK-1D	RK-2D
Dimensions (w×d×h)	Platform (mm)	290×200	300×300
	Overall (mm)	290×240×150	300×330×150
Angle (degree)		$\pm 6^\circ / \pm 9^\circ$ (Default)	
Motor		35 W Geared DC Motor	
Speed Range (rpm)		5 ~ 50	
Controller		Programmable Digital Feedback Controller with Jog-Shuttle Switch(Turn+Push)	
Program Function		10 Steps, 6 Programs	
Display		Digital LCD Display with Back-Light Function	
Timer		99 hr 59 min (Programmable)	
Safety Device		Over Load Protector for motor	
Others		CE Certified Smooth Start and Change of the Stirring Speed for Stable Running Storage Function (RPM, Timer) Locking Mode (Jog-Shuttle Input Disabled) Alarm (Error Status and Timer-end)	
Packing Dimension (w×d×h) (mm)		450×350×250	
Gross Weight		7 kg	8 kg
Power Consumption		35 W	
Power plug type		Hybrid E+F	
Power Supply*		AC 230 V, 50 / 60 Hz	

* Other Specifications are available upon Customer's Request.



Example of Program

Patented Control System (No. 10-0554098)

1 or 2 Mode Buttons + Jog Shuttle Switch
Realize “Easy to Use”

Ordering Information

DH.WRK01010 Digital Rocker, **RK-1D**, w 290×d 200 mm Platform, with Rubber Pad
DH.WRK01020 , **RK-2D**, w 300×d 300 mm Platform, with Rubber Pad

Optional Accessories

DH.WRK05011 Second Platform, **RK5011**, for **RK-1D**, with 4 Pillars, w 290×d 200
DH.WRK05021 , **RK5021**, for **RK-2D**, with 4 Pillars, w 300×d 300

“witeg” **WiseMix®RT** Programmable Digital Rotator, Programmable Digital Feedback Control Adjustable Speed & Angle of Rotation, Continuous or Timed Operation, 5~60 rpm, 0°~90° Mixing Angle



**Programmable Digital Rotator (RT-10)
with 1,5 ml × 32 ea Disk (WRT120)**

- Adjustable Speed and Angle of Rotation : 0° to 90°
- Patented Jog-Shuttle Control System
- CE Certified

Application & Features

- * Adjustable Speed and Angle of Rotation : 0° to 90°
- * Digital Feedback Control: Steady and Constant Rotating.
- * Continuous or Timed Operation.
- * Digital LCD Display with Back-Light Function.
- * Programmable Operation Mode Supported : 10 Steps and 6 Programs.
- * Over-Load Protection for motor.
- * Smooth Start and Change of the Stirring Speed.
- * Storage Function for Set values of RPM and Time.
- * Locking Mode Supported for Experimental Safety. (Input to Jog-Shuttle can be Disabled)
- * Durable Construction for Long-Term Operation.
- * 5 Different Disks and 3 Roller Drums. (Optional)
- * Disk for 250 ml Flask is available.
- * Patented Jog-Shuttle Control System.
- * CE Certified.

Specification

Model	RT-10
Angle range	0° ~ 90°
Speed range	5 ~ 60 rpm
Controller	Programmable Digital Feedback Controller with Jog-Shuttle Switch(Turn+Push)
Program Function	10 Steps, 6 Programs
Display	Digital LCD Display with Back-Light Function
Timer	99 hr 59 min (Continuous Function Included)
Temp. Resistance	Lower than 65 °C (Dry Air)
Weight	4,5 kg
Dimensions (w×d×h) (mm)	200×250×260
Motor	40 W
Others	CE Certified Storage Function (Temp., Timer) Locking Mode (Jog-Shuttle Input Disabled) User Self-compensation Function Alarm (Error Status and Timer-end)
Packing Dimension (w×d×h) (mm)	370×240×430
Gross Weight	6 kg
Power Consumption	35 W
Power plug type	Hybrid E+F
Power	AC 230 V, 50 / 60 Hz

Ordering Information

DH.WRT00010 Digital Rotator, **RT-10 Unit Only**, 5~60 rpm, with mount knobs

Optional Accessory

- DH.WRT00100** Disk, **WRT100**, 50 ml conical tube-capacity : 8 ea
- DH.WRT00110** , **WRT110**, 15 ml conical tube-capacity : 16 ea
- DH.WRT00120** , **WRT120**, 1,5 ml conical tube-centrifuge : 32 ea
- DH.WRT00130** , **WRT130**, 1,5 ml conical tube-centrifuge : 60 ea
- DH.WRT00140** , **WRT140**, 250 ml Flask-capacity : 4 ea
- DH.WRT00200** Roller Drum, **WRT200**, up to 15 mm Dia. tube : 151 ea
- DH.WRT00210** , **WRT210**, up to 17 mm Dia. tube : 104 ea
- DH.WRT00220** , **WRT220**, up to 24 mm Dia. tube : 42 ea
- DH.WRT00300** Post, **WRT300**, for Installing Disk Together (with 4 knobs)



Disk, WRT100



Disk, WRT110



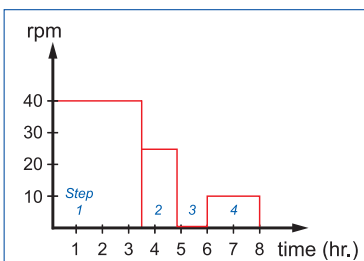
Disk, WRT120



Disk, WRT130



Post, WRT300



Example of Program

“witeg” **WiseMix[®] VM** Multifunction Vortex Mixer Set, Up to 3.300 rpm Variable Speed Control, Continuous or Touch on Mixing, with ϕ 76 mm (3 inch) Platform Head & Pop-off Cup Head

- Ideal for Mixing Solutions in Test Tubes or Small Flasks with Circular, Oscillating Movement
- Variable Speed Control Allows Slow Speed Shaking Action up to High Speed Vortexing
- CE Certified

Application & Features

- * Ideal for Mixing Solutions in Test Tubes or Small Flasks with Circular, Oscillating Movement.
- * Supplied with ϕ 76 mm Platform and Pop-Off Cup.
- * Realize High Power, Stable Motion with Low Noise.
- * Tough Metal Housing Provides a Stable Platform for all types of Mixing.
- * 3-position Power Switch Operates with Continuous Action or “Touch On” Control.
- * Variable Speed Control Allows Slow Speed Shaking Action up to High Speed Vortexing.
- * Aluminum Die-casting with Powder Coating.
- * Various Shapes, Sizes and Materials of the Head allows for mixing of almost all Common Tubes or Containers.
- * CE Certified.

Specification

Model	VM-10
Shaking Motion	Orbital
Control	Analog Phase Controller
Speed Range	0 ~ 3.300 rpm
Dimensions (w × d × h) (mm)	160 × 128 × 145
Body	Aluminum Die-casting with Powder Coating
Weight	3 kg
Accessories	Pop-off Cup Head and ϕ 76 mm Platform included
Others	CE Certified 3-position Power Switch Operation Aluminum Die-Casting with powder Coating
Packing Dimension (w × d × h) (mm)	260 × 200 × 220
Gross Weight	4 kg
Power Consumption	30 W
Power plug type	Hybrid E+F
Power	AC 230 V, 50 / 60 Hz

* Other Specifications are available upon Customer's Request.

Ordering Information

DH.WVM00010 Multifunction Vortex Mixer Set, **VM-10**, 3.300 rpm, with **PM110** ϕ 76 mm (3inch) Platform Head and **PM210** Pop-off Cup Head

Spare Accessory

DH.WVM00110 Platform Head, **PM110**, ϕ 76 mm (3inch) for **VM-10**

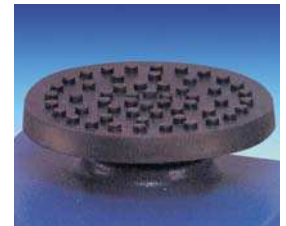
DH.WVM00210 Pop-off Cup Head, **PM210**, for **VM-10**

Optional Accessories

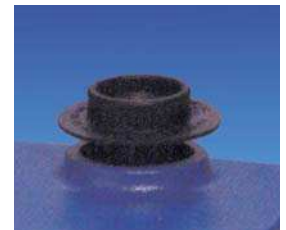
DH.WVM00310 Multiple Sample Starter Set, **PM310**, for **VM-10** with a base Platform, Microtube Foam Insert and Microplate Foam Insert



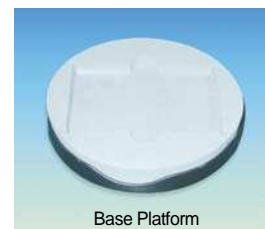
Multifunction Vortex Mixer Set (VM-10) with ϕ 76mm (3") Platform (PM110)



Platform Head, ϕ 76mm(3inch) (PM110)



Pop-off Cup Head (PM210)



Base Platform



Microplate Foam

Multiple Sample Starter Set (PM310)

“witeg” **WiseShake® SHO** Digital Orbital Shaker, 10~300 rpm, Low Noise & Long Life Cycle Programmable Digital Feedback Control System, Rubber Mat Platform & Variable Flask Holders



Digital Orbital Shaker (SHO-1D) with Rubber Mat Platform (SP110)

- Ideal for Culturing Cells to Hybridization, Staining and Destaining Gels, and Combinatorial Chemistry
- **Patented Jog-Shuttle Control System**
- CE Certified

Application & Features

- * Ideal for Culturing Cells to Hybridization, Staining and Destaining Gels, and Combinatorial Chemistry.
- * Optimal Platform Rotation for Intensive Mixing.
- * Brushless DC Motor. (Low Noise & Long Life Cycle)
- * High Precision Digital Rotation Speed Control.
- * Programmable Operation Mode Supported.
- * Digital LCD Display with Back-Light Function.
- * Smooth Start and Change of Shaking Speed.
- * Universal Platform for Easy and Fast Fixation of Any Kind of Flasks and Bottles. (Optional)
- * Storage Function, Alarm & Over-Load Protection.
- * Locking Mode Supported for Experimental Safety. (Input to Jog-Shuttle can be Disabled)
- * Variety of Optional Accessories are Available.
- * **Patented Jog-Shuttle Control System.**
- * CE Certified.

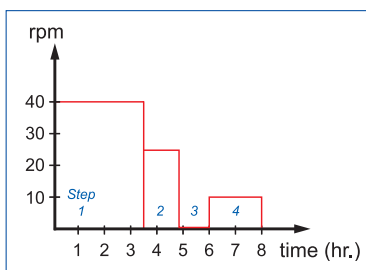


Digital Orbital Shaker (SHO-2D) with Universal Platform (SP200)

Specification

Model	SHO-1D	SHO-2D
Motor	Brushless DC Motor	
Dimension (w×d×h) (mm)	250×330×150	400×480×160
Base Platform Size (mm)	230×230	350×350
Max. Load	8 kg	10 kg
Amplitude of Rotation (mm)	15 mm as Factory Default When you place your order, 10 and 20 mm, you can choose one.	30 mm as Factory Default When you place your order, 10, 15, 20 and 40mm, you can choose one.
Speed Range	10 ~ 300 rpm	
Controller	Programmable Digital Feedback Controller with Jog-Shuttle Switch (Turn+Plus)	
Program Function	10 Steps, 6 Programs	
Display	Digital LCD Display with Back-Light Function	
Platform	Universal Platform for various Shapes & Size of Flask	
Shaking Table Lock	Yes	
Permissible Ambient Temperature	Ambient +5 ~ 50 °C	
Permissible Relative Moisture	85 %	
Capacity of Flask Holder	FH100	9 ea
	FH250	7 ea
	FH500	4 ea
Holder	Durable & Flexible Plastic Flask holder	
Safety Device	Over Load Protector for Motor	
Weight	14 kg	20 kg
Others	CE Certified Smooth Start and Change of the Stirring Speed for Stable Running Storage Function (Program, RPM, Timer) Locking Mode (Jog-Shuttle Input Disabled) Alarm (Error Status and Timer-end)	
Packing Dimension (w×d×h) (mm)	450×350×250	580×500×250
Gross Weight	18 kg	23 kg
Power Consumption	40 W	
Power plug type	Hybrid E+F	
Power Supply*	AC 230 V, 50 / 60 Hz	

* Other Specifications are available upon Customer's Request.



Example of Program

<Continued on Next page>

<Continued from... "witeg" WiseShake® SHO Digital Orbital Shaker >

Ordering Information

DH.WSO04010 Digital Orbital Shaker, **SHO-1D** Unit only, without Platform

DH.WSO04012 Digital Orbital Shaker, **SHO-2D** Unit only, without Platform

Optional Accessories

DH.WSO504100 Universal Platform, **SP100**, for **SHO/SHR-1D**, w 230 × d 230 mm

DH.WSO504110 Rubber Mat Platform, **SP110**, for **SHO/SHR-1D**, w 270 × d 270 mm

DH.WSO504120 Platform for Flasks, **SP120**, for **SHO/SHR-1D**, w 366 × d 355 × h 175 mm

DH.WSO504130 Platform for Separatory Funnels, **SP130** for **SHO / SHR-1D**, w 366 × d 351 × h 175 mm

DH.WSO504200 Universal Platform, **SP200**, for **SHO/SHR-2D**, w 350 × d 350 mm

DH.WSO504210 Rubber Mat Platform, **SP210**, for **SHO/SHR-2D**, w 370 × d 370 mm

DH.WSO504220 Platform for Flasks, **SP220**, for **SHO/SHR-2D**, w 366 × d 355 × h 175 mm

DH.WSO504230 Platform for Separatory Funnels, **SP230** for **SHO/SHR-2D**, w 366 × d 351 × h 175 mm

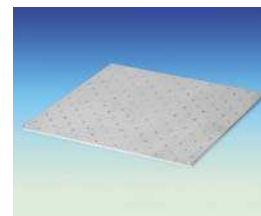
DH.WIS504030 Flask Holder, **FH100**, 50–100 ml, for **SHO, SHR** and **WIS**

DH.WIS504035 Flask Holder, **FH250**, 200–300 ml, for **SHO, SHR** and **WIS**

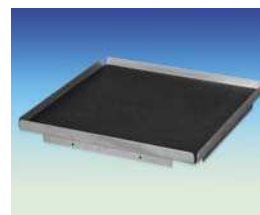
DH.WIS504040 Flask Holder, **FH500**, 500–1.000 ml, for **SHO, SHR** and **WIS**



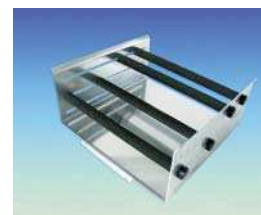
Flask Holders (FH500, FH250 & FH100)



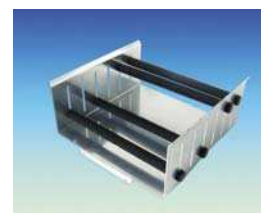
Universal Platform (SP100 / SP200)



Rubber Mat Platform (SP110 / SP210)



Platform for Flasks (SP120 / SP220)

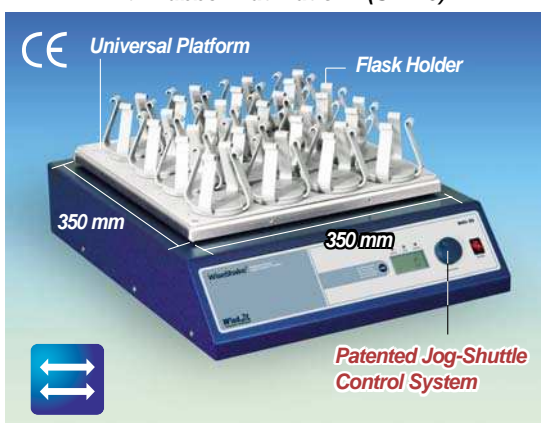


Platform for Separatory Funnels (SP130 / SP230)

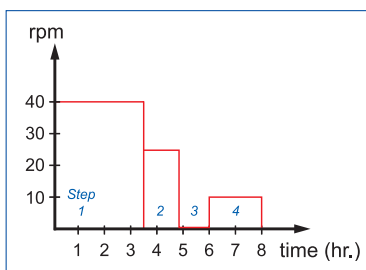
“witeg” **WiseShake® SHR** Digital Reciprocating Shaker, 10~300 rpm, Low Noise & Long Life Cycle Programmable Digital Feedback Control System, Rubber Mat Platform & Variable Flask Holders



Digital Reciprocating Shaker (SHR-1D) with Rubber Mat Platform (SP110)



Digital Reciprocating Shaker (SHR-2D) with Universal Platform (SP200)



Example of Program

- **Ideal for Culturing Cells to Hybridization, Staining and Destaining Gels, and Combinatorial Chemistry**
- **Patented Jog-Shuttle Control System**
- **CE Certified**

Application & Features

- * Ideal for Culturing Cells to Hybridization, Staining and Destaining Gels, and Combinatorial Chemistry.
- * Optimal Platform Rotation for Intensive Mixing.
- * Brushless DC Motor. (Low Noise & Long Life Cycle)
- * High Precision Digital Rotation Speed Control.
- * Programmable Operation Mode Supported.
- * Digital LCD Display with Back-Light Function.
- * Smooth Start and Change of Shaking Speed.
- * Universal Platform for Easy and Fast Fixation of Any Kind of Flasks and Bottles. (Optional)
- * Storage Function, Alarm & Over-Load Protection.
- * Locking Mode supported for Experimental Safety. (Input to Jog-Shuttle can be Disabled)
- * Variety of Optional Accessories are Available.
- * **Patented Jog-Shuttle Control System.**
- * CE Certified.

Specification

Model	SHR-1D	SHR-2D
Motor	Brushless DC Motor	
Dimension (w × d × h) (mm)	250 × 330 × 150	400 × 480 × 160
Base Platform Size (mm)	230 × 230	350 × 350
Max. Load	8 kg	10 kg
Amplitude of Rotation (mm)	15 mm as Factory Default When you place your order, 10 and 20 mm, you can choose one.	30 mm as Factory Default When you place your order, 10, 15, 20 and 40mm, you can choose one.
Speed Range	10 ~ 300 rpm	
Controller	Programmable Digital Feedback Controller with Jog-Shuttle Switch(Turn+ Push)	
Program Function	10 Steps, 6 Programs	
Display	Digital LCD Display with Back-Light Function	
Platform	Universal Platform for various Shapes & Size of Flask	
Shaking Table Lock	Yes	
Permissible Ambient Temperature	Ambient +5 ~ 50 °C	
Permissible Relative Moisture	85 %	
Capacity of Flask Holder	FH100	9 ea
	FH250	7 ea
	FH500	4 ea
Holder	Durable & Flexible Plastic Flask holder	
Safety Device	Over Load Protector for motor	
Weight	14 kg	20 kg
Others	CE Certified Smooth Start and Change of the Stirring Speed for Stable Running Storage Function (Program, RPM, Timer) Locking Mode (Jog-Shuttle Input Disabled) Alarm (Error Status and Timer-end)	
Packing Dimension (w × d × h) (mm)	450 × 350 × 250	580 × 500 × 250
Gross Weight	18 kg	23 kg
Power Consumption	40 W	
Power plug type	Hybrid E+F	
Power Supply*	AC 230 V, 50 / 60 Hz	

* Other Specifications are available upon Customer's Request.

<Continued on Next page>

<Continued from... "witeg" WiseShake®SHR Digital Reciprocating Shaker>

Ordering Information

DH.WSR04020 Digital Orbital Shaker, **SHR-1D** Unit only, without Platform

DH.WSR04022 Digital Orbital Shaker, **SHR-2D** Unit only, without Platform

Optional Accessories

DH.WSO504100 Universal Platform, **SP100**, for **SHO/SHR-1D**, w 230 × d 230 mm

DH.WSO504110 Rubber Mat Platform, **SP110**, for **SHO/SHR-1D**, w 270 × d 270 mm

DH.WSO504120 Platform for Flasks, **SP120**, for **SHO/SHR-1D**, w 366 × d 355 × h 175 mm

DH.WSO504130 Platform for Separatory Funnels, **SP130** for **SHO/SHR-1D**, w 366 × d 351 × h 175 mm

DH.WSO504200 Universal Platform, **SP200**, for **SHO/SHR-2D**, w 350 × d 350 mm

DH.WSO504210 Rubber Mat Platform, **SP210**, for **SHO/SHR-2D**, w 370 × d 370 mm

DH.WSO504220 Platform for Flasks, **SP220**, for **SHO/SHR-2D**, w 366 × d 355 × h 175 mm

DH.WSO504230 Platform for Separatory Funnels, **SP230** for **SHO/SHR-2D**, w 366 × d 351 × h 175 mm

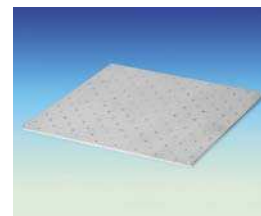
DH.WIS504030 Flask Holder, **FH100**, 50–100 ml, for **SHO, SHR** and **WIS**

DH.WIS504035 Flask Holder, **FH250**, 200–300 ml, for **SHO, SHR** and **WIS**

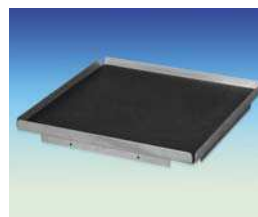
DH.WIS504040 Flask Holder, **FH500**, 500–1.000 ml, for **SHO, SHR** and **WIS**



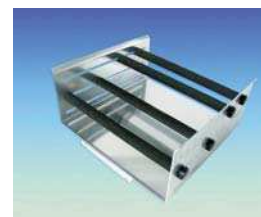
Flask Holders (FH500, FH250 & FH100)



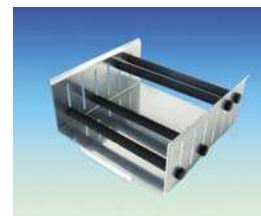
Universal Platform (SP100 / SP200)



Rubber Mat Platform (SP110 / SP210)



Platform for Flasks (SP120 / SP220)



Platform for Separatory Funnels (SP130 / SP230)