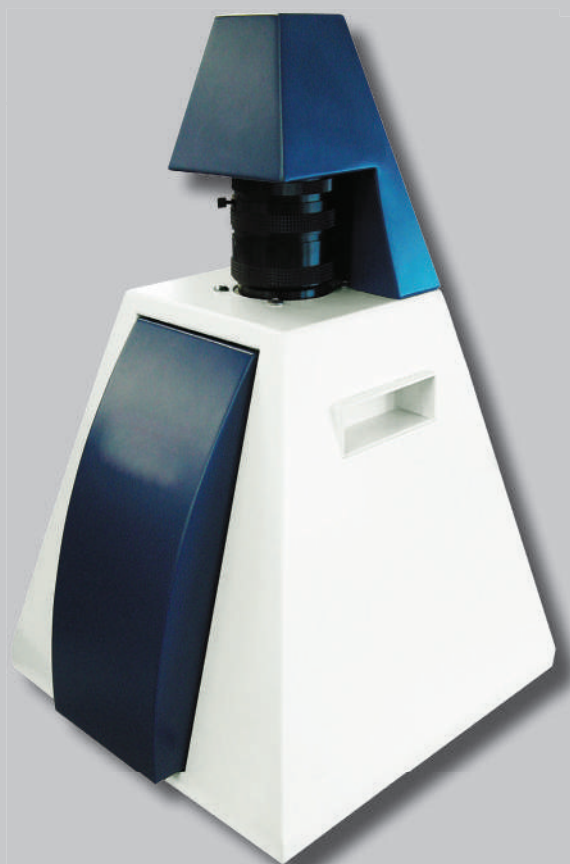


Gel documentation system

portable gel documentation system with integrated camera and software



WGD-20 Gel documentation system

Ideal for:

- DNA, RNA gel imaging capture and analysis

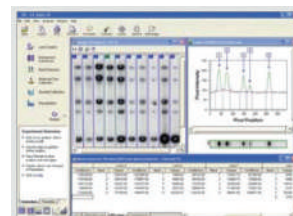
Features:

- the most cost-effective system
- high precise and large calibre optical lens with zoom, focus and iris control
- digital CCD camera (resolution 1360x1024, 1.5 m pixel) with portable darkroom 10-bit CCD, available for 8-bit grey level image capturing
- very compact portable darkroom system for highest flexibility
- existing transilluminator can be used
- USB 2.0 interface for real-time images and data transfer
- power supply via USB
- WiseCapture II™ software: easy and fast view, capture and save gel images (included)
- TotalLab™ Quant software (WGD-20S): fully automatic, single button press complete image analysis in interesting area
- CE certified and unique serial number for tracing

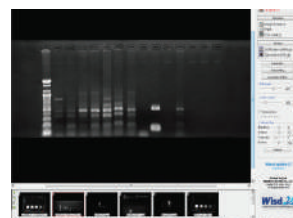
Model	WGD-20	WGD-20S
CCD & pixel size	1/2" CCD, 4.65 x 4.65 um	
Lens mount & optical size	C mount, 7.6 x 6.2 mm	
Interface & Power	USB 2.0	
Iris & focal length	F1.0-close, 8 - 48 mm	
Operation temperature	-10°C to +50°C	
Software capability	Windows XP, Vista & 7	
DNA analysis software included	WiseCapture II™	WiseCapture II™ TotalLab™ Quant
Dimension & weight	260 x 260 x 430 mm, 9 kg	
Packing size	400 x 350 x 510, 18 kg	
Order number	DH.WGD00020	DH.WGD00024

Scope of supply:

- gel documentation system with CCD camera
- WiseCapture II™ software
- TotalLab™ Quant software (only WGD-20S)



WiseCapture II™ software
easy and fast view, capture and save gel images included



TotalLab™ Quant
automatic and manual lane detection, background subtraction, fully automatic band detection, molecular size / pI calibration, quantity calibration, normalization

more information on page 203

Accessories: Suitable UV transilluminator and software can be found on page 204

Gel documentation system

gel documentation system with integrated camera, UV transilluminator and software



WGD-G2 Gel documentation system

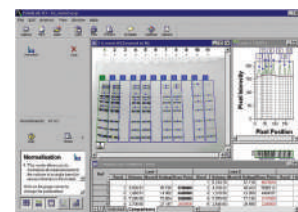
Ideal for:

- DNA, RNA gel imaging capture and analysis

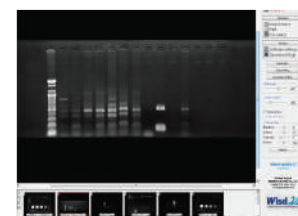
Features:

- a high-quality optical lens with zoom, focus and iris control
- unified darkroom system with in-built sliding transilluminator (312nm, 6x 8W UV lamps) for very high safety
- white light: 3x LED lamps
- digital CCD camera (F1.0, 8 - 48mm, 1.45 m pixel, 1360x1024)
- USB 2.0 interface for real-time images and data transfer
- „View“ capture software: easy and fast view, capture and save gel images (included)
- CE certified and unique serial number for tracing
- optional software: TotalLab™ Quant

Model	WGD-G2
CCD & pixel size	1.45 m pixel, 1360x1024
Lens	F1.0-close, 8 - 48 mm
Interface	USB 2.0
Operation temperature	-10°C to +50°C
UV Transilluminator	312nm, 6 x 8W, 210 x 260mm
White light	3x LED lamps
Software capability	Windows XP, Vista & 7
DNA analysis software included	„View“ capture software
Dimension & weight	360 x 290 x 700 mm, 24 kg
Packing size	430 x 490 x 830 mm, 28 kg
Power supply	1 Phase AC 120V, 60Hz or 230V, 50/60 Hz
Order number 230V	DH.WGD00300
Order number 120V	DH.WGD00301



„View“ capture software
easy and fast view, capture
and save gel images
included



TotalLab™ Quant
automatic and manual lane
detection, background sub-
traction, fully automatic
band detection, molecular
size / pI calibration, quanti-
ty calibration, normalization

more information on 203

Scope of supply:

- gel documentation system with CCD camera
- UV transilluminator 312nm (6x8W) (built-in)
- „View“ capture software

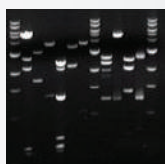
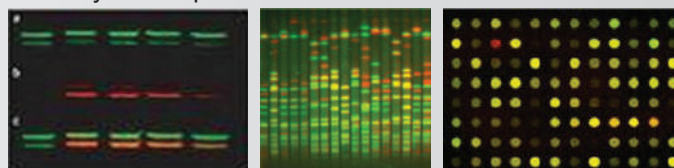
Accessories: Suitable UV lamps and software can be found on page 204

TotalLab™ Quant

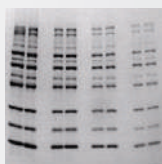
TotalLab Quant is a suite of core analysis tools for quantitative image analysis applications in the Life Sciences. Tools are included for analysis of both bands and spots from a variety of samples.

Following modules are included:

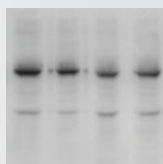
- 1D electrophoresis gel and Western blot analysis
- array / dot blot / slot blot analysis
- colony counting & basic 2D spot measurement
- general feature-based image analysis



1D DNA gel



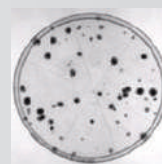
1D Protein gel



Western blot



Protein array

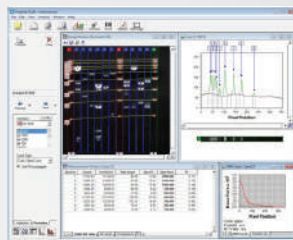
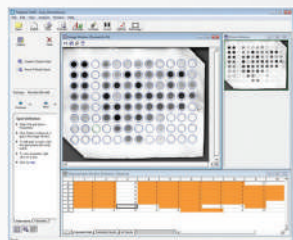


Colony counting

The user then has full control of the visualisation tools and data display - outputting only those data fields that are of importance as well as the images of choice.

Features:

- compatible with 21CFR part 11 compliance module
- automatic detection of lanes and bands
- automatic background subtraction
- image manipulation tools
- lane templates
- molecular weight calibration
- quantity calibration & normalisation
- profile deconvolution
- reports
- array analysis module
- colony counting module
- toolbox for general analysis



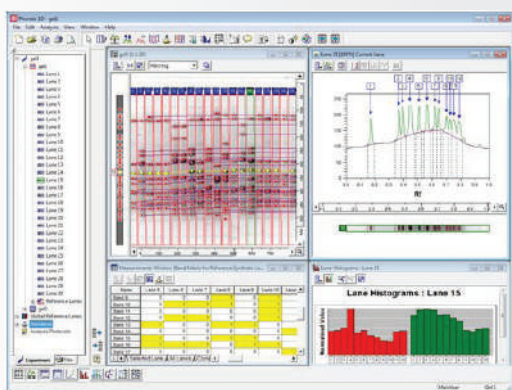
Software	Order number
TotalLab™ Quant (included WGD-20S / WGD-30S)	DH.WGD00100

Phoretix 1D

Phoretix 1D analyses gel in quantitative and qualitative ways. It can import TIF images from different sources.

Features:

- automatic detection of lanes and bands
- automatic background subtraction
- image manipulation tools
- lane templates
- molecular weight calibration
- quantity calibration & normalisation
- profile deconvolution
- Rf calibration
- band picking
- band pattern matching - single gel
- dendrogram - single gel
- reports
- array analysis module
- colony counting module
- toolbox for general analysis



Phoretix 1D Pro

Phoretix 1D Pro includes all features of Phoretix 1D as well as a database for storing and controlling of 1D experiments, gels and lanes.

Additional features:

- band pattern matching - lanes across multiple gels
- band pattern queries
- dendrogram - lanes from multiple gels
- data archive and search facility
- classification and identification tools

Software	Order number
Phoretix 1D	DH.WGD00120
Phoretix 1D Pro	DH.WGD00121